

COREP

Converters & Developments

Excel to XBRL mapper

(web-based)

COREP Project Team
Katrin Schmehl

Madrid, 2006-02-02

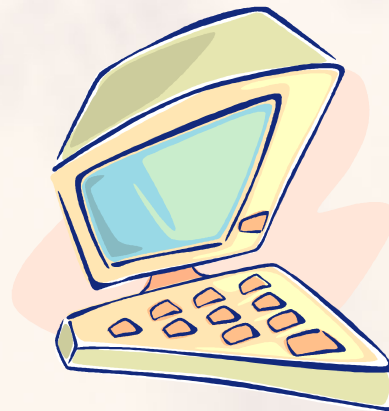
Why building own software?



- At the beginning **no commercial tool** supported the new XBRL functionality of dimensions.
- **Implementation** after the first publishing of COREP taxonomies (**March/April 05**).
- Commercial banks could have a **first impression** of COREP.
- Banks were invited to **provide test cases**.
- Enable to **test** the COREP taxonomies.
- A **proof of concept** that an easy solution can be achieved within a short timeframe.

Functionality of the Excel to XBRL mapper

- **Creation of COREP instances from “coreptest” Excel files**
- **XBRL-Validation by using the integrated validation tool True North of DecisionSoft**
- **Web-based collection of COREP data using HTML input forms**



Excel to XBRL mapping: Steps

- **Fill in** all the relevant data in the **COREP** templates of the **coreptest file**.
- **Save** the file.
- **Remove** the **formats** and additional reference pages by pressing the keys <Ctrl>,<Shift> and <D> at the same time.
- **Save** the result.

Creation of COREP instances from Excel files



The level of validation can be chosen.

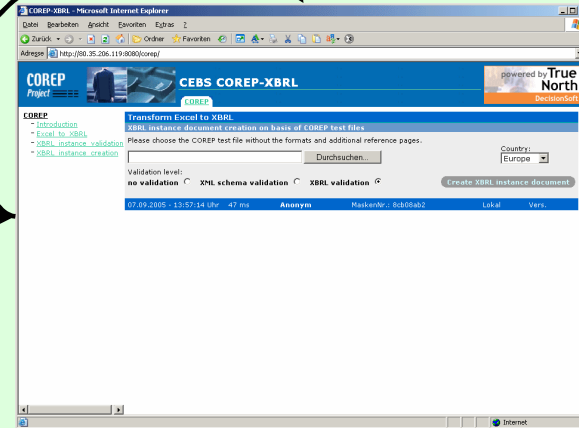
2

INTERNET

Table with columns: CENTRAL GOVERNMENTS AND CENTRAL BANKS, INSTITUTIONS, CORPORATE, RETAIL, EQUITY, SECURITISATION, OTHER NON-CREDIT OBLIGATION ASSETS OTHER ITEMS, TOTAL OUTFLOWS. Rows include: CENTRAL GOVERNMENTS AND CENTRAL BANKS, INSTITUTIONS, CORPORATE, RETAIL, EQUITY, SECURITISATION, OTHER NON-CREDIT OBLIGATION ASSETS OTHER ITEMS, TOTAL OUTFLOWS.

coreptest file

Upload the excel file without the formats to the application



Excel to XBRL mapper

Generated XBRL instance can be saved

4

Start the transformation to an XBRL instance.

3

```

<?xml version="1.0" encoding="UTF-8" standalone="no" ?>
<xhtml xmlns="http://www.w3.org/1999/xhtml" xmlns:cr="http://www.c-
ebs.org/dimensions/4-cr-2005-06-30" xmlns:me="http://www.c-
ebs.org/dimensions/4-me-2005-06-30" xmlns:ec="http://www.c-
ebs.org/dimensions/4-ec-2005-06-30" xmlns:io="http://www.c-
ebs.org/templates/t-io-2005-06-30">
<xbrl:schemaRef xlink:type="simple"
xlink:arcrole="http://www.w3.org/1999/xlink/properties/linkbase"
xlink:href="c-eu-2005-06-30.xsd" />
<m-rr:CentralGovernmentsCentralBanks contextRef="cxt_t-io_1_1" decimals="0"
unitRef="EUR">7000</m-rr:CentralGovernmentsCentralBanks>
<m-rr:Institutions contextRef="cxt_t-io_1_1" decimals="0" unitRef="EUR">8000</m-
rr:Institutions>
<m-rr:Corporate contextRef="cxt_t-io_1_1" decimals="0" unitRef="EUR">9000</m-
rr:Corporate>
<m-rr:Retail contextRef="cxt_t-io_1_1" decimals="0" unitRef="EUR">10000</m-
rr:Retail>
<m-rr:Equity contextRef="cxt_t-io_1_1" decimals="0" unitRef="EUR">11000</m-
rr:Equity>
<m-rr:Securitisation contextRef="cxt_t-io_1_1" decimals="0"
unitRef="EUR">12000</m-rr:Securitisation>
<m-rr:OtherNonCreditObligationAssetsOtherItems contextRef="cxt_t-io_1_1"
decimals="0" unitRef="EUR">13000</m-
rr:OtherNonCreditObligationAssetsOtherItems>
<m-rr:TotalOutflows contextRef="cxt_t-io_1_1" decimals="0"
    
```

COREP XBRL instance



XBRL-Validation by True North



- True North enables XBRL validation on basis of **XBRL specification 2.1**.
- **Easy integration** into the own application.
- **Java based tool**.
- Excel to XBRL mapper **reports** the errors as list.
- DecisionSoft **supports** the COREP Project by providing their tool for six months.



Excel to XBRL mapper: Architecture

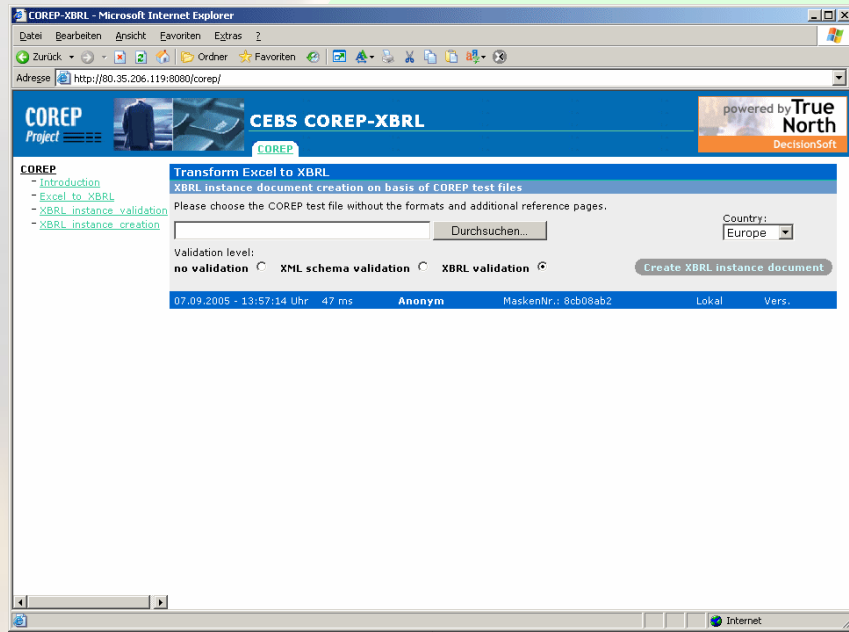
- **Java based web: **standard technology**.**
- **Uses only free available **open source** packages.**
- **Application can be run on an open source application server called Apache Tomcat.**
- **XBRL validation is included for a limited time frame.**
- **The application can be **freely used** over the internet.**

Excel to XBRL mapper: Application design

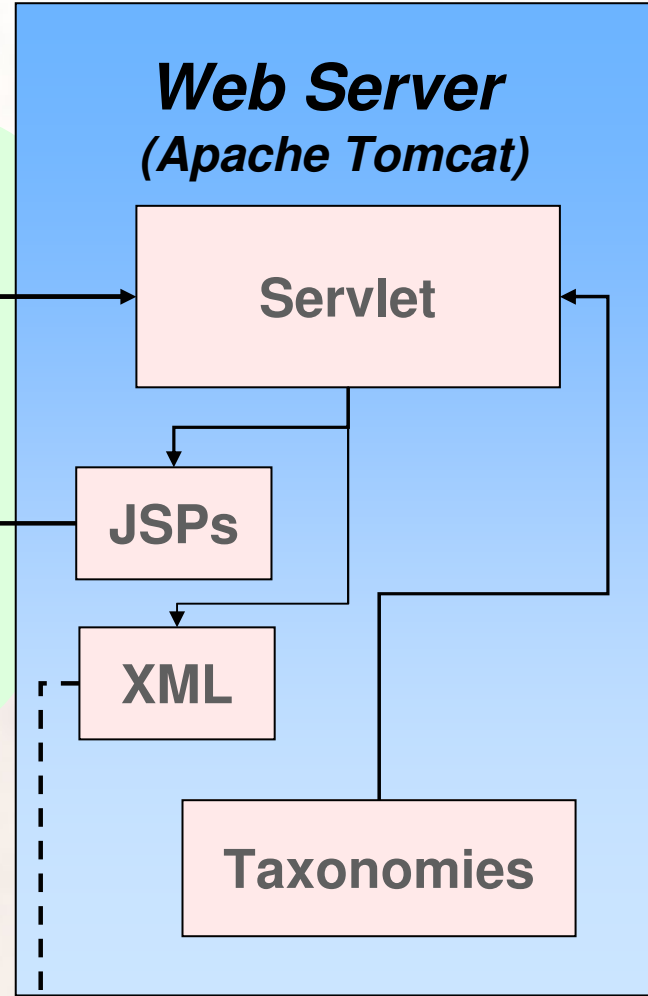
Adresse http://80.35.206.119:8080/corep/

1
HTTP request to the web based mapper tool

INTERNET



2
HTTP response generated by the application



2
XBRL is sent via HTTP

Thank you for your attention!

Questions?

Link to the tools:

<http://www.corep.info/server>

